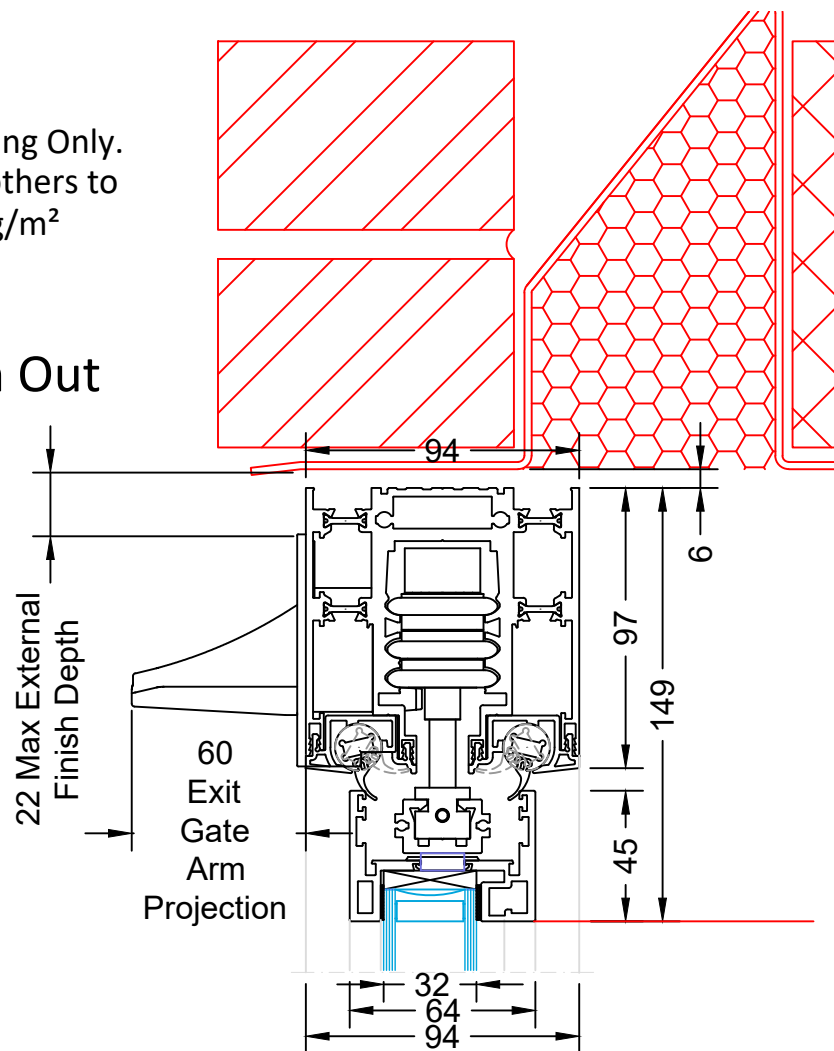


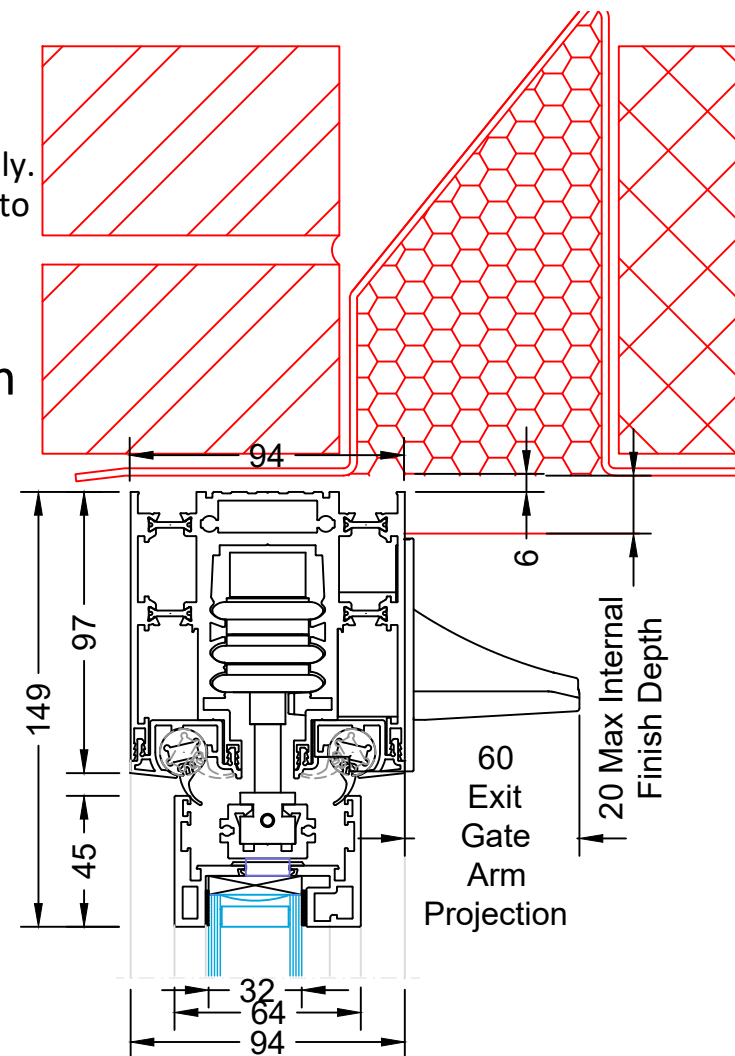
Top Running Only.  
Lintel by others to  
carry 35kg/m<sup>2</sup>

Open Out



Top Running Only.  
Lintel by others to  
carry 35kg/m<sup>2</sup>

Open In



No Sill

92

46

4

98

6

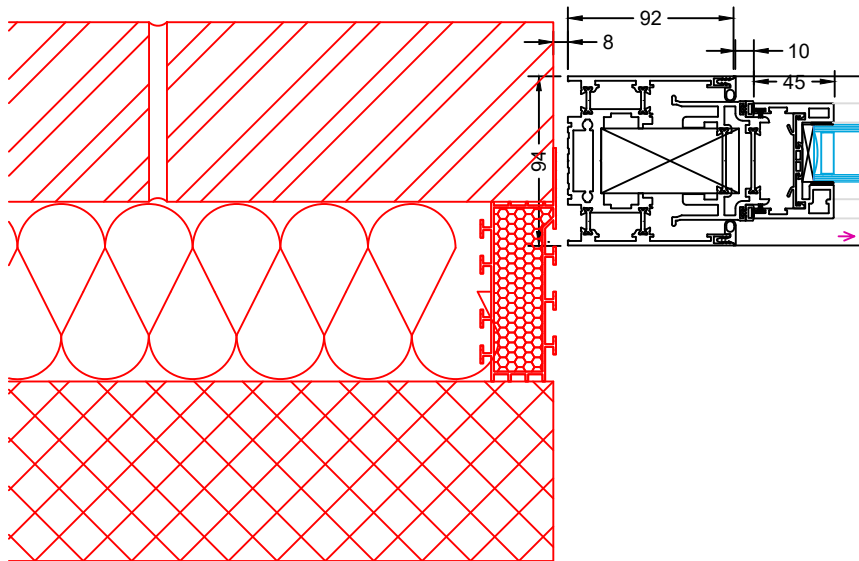
DPM

94

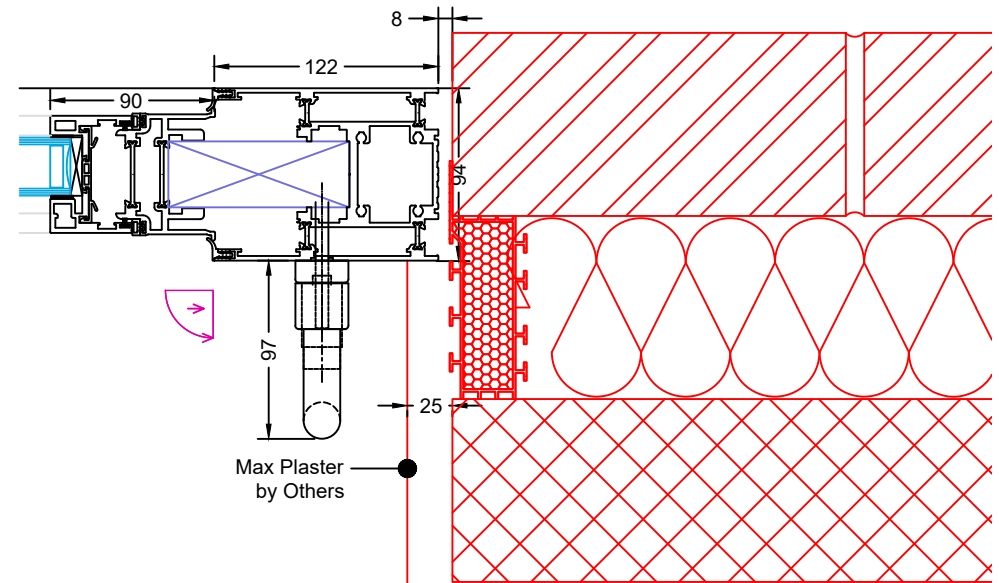
Solid Filled Cavity

Technical cross-section drawing of a mechanical assembly. The drawing shows a central component with a threaded section on the right. Dimensions are indicated with arrows and numbers: 92, 46, 124, 6, and 190. A label 'DPM' is present near the 190 dimension. A label 'Solid Filled Cavity' is located on the right side of the drawing. The drawing includes a red hatched area at the bottom, likely representing a base or support structure.

Fixed Jamb in Closed Position

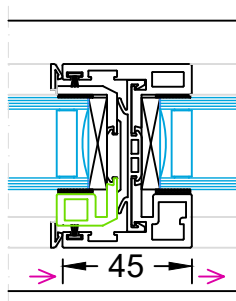


Opening Jamb in Closed Position

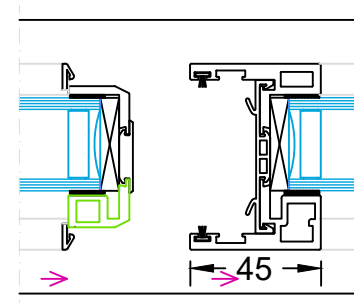


Technical drawing of a window frame assembly. The drawing includes a side view of the frame with dimensions: 45, 122, 8, 94, 25, and 97. A detail view shows the frame profile with a blue arrow indicating the direction of the frame. A section view shows the frame assembly with a red hatched area indicating the maximum plaster by others. The drawing is labeled 'Max Plaster by Others'.

mullion in closed  
position

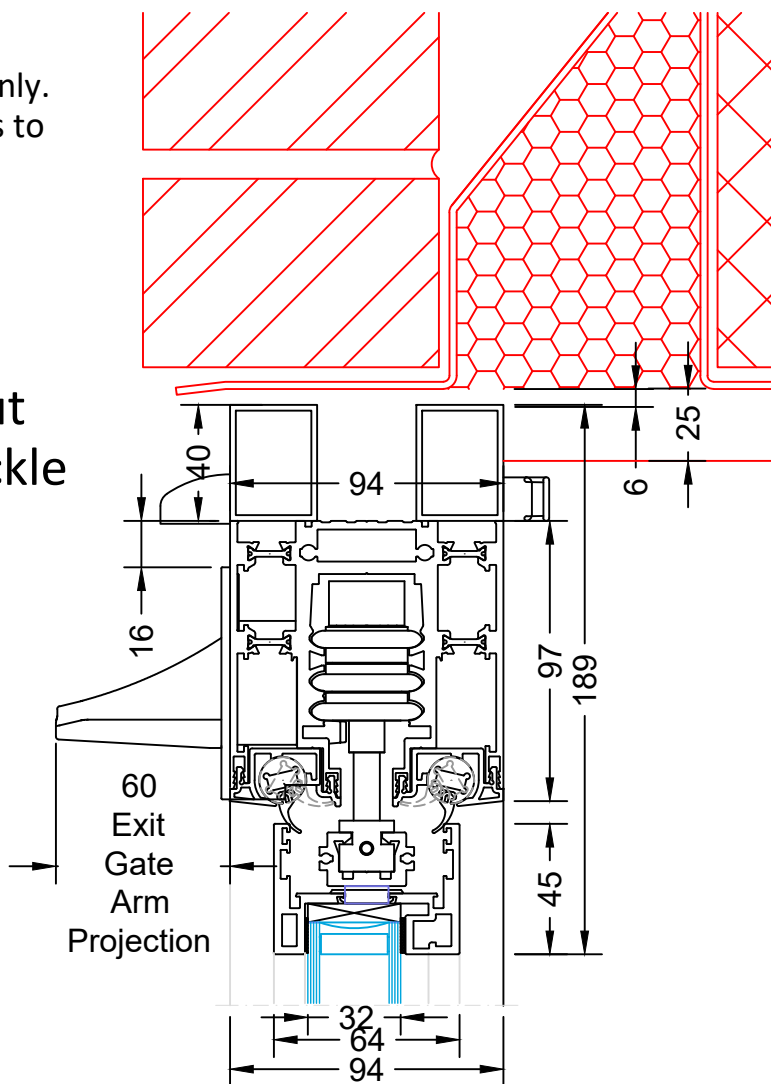


mullion in opening  
position



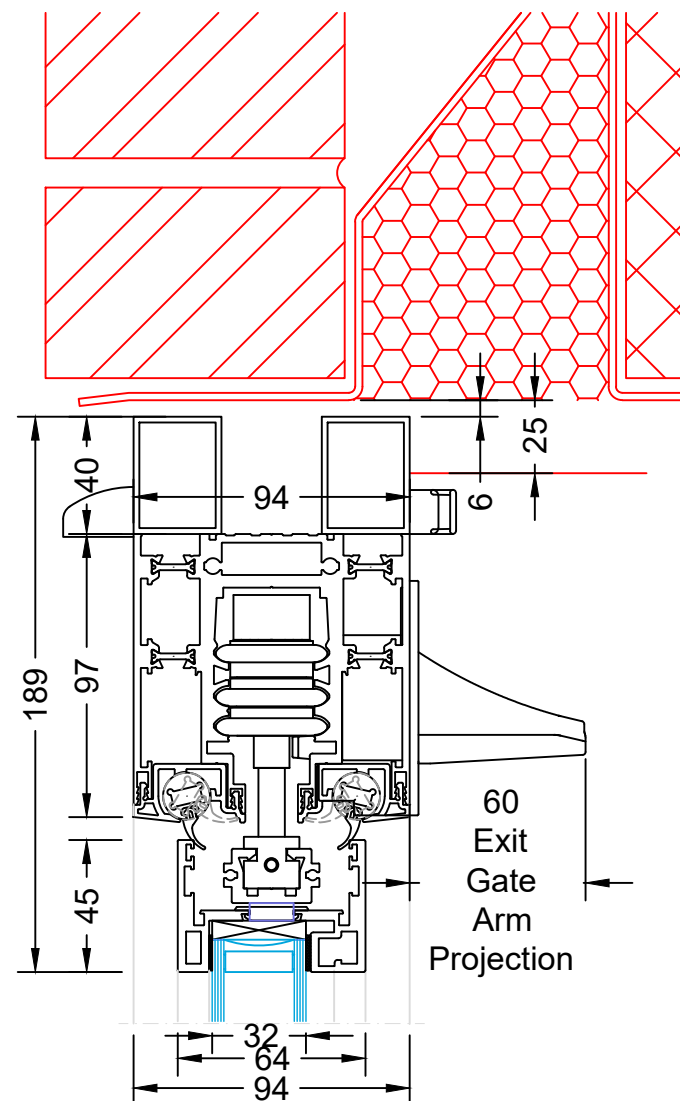
Top Running Only.  
Lintel by others to  
carry 35kg/m<sup>2</sup>

Open Out  
with Trickle  
Vent

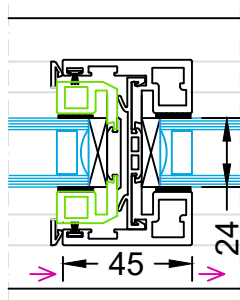


Top Running Only.  
Lintel by others to  
carry 35kg/m<sup>2</sup>

Open In  
with Trickle  
Vent



## 24mm Double Glazed Detail



## mullion in opening position

